

ISSUE:

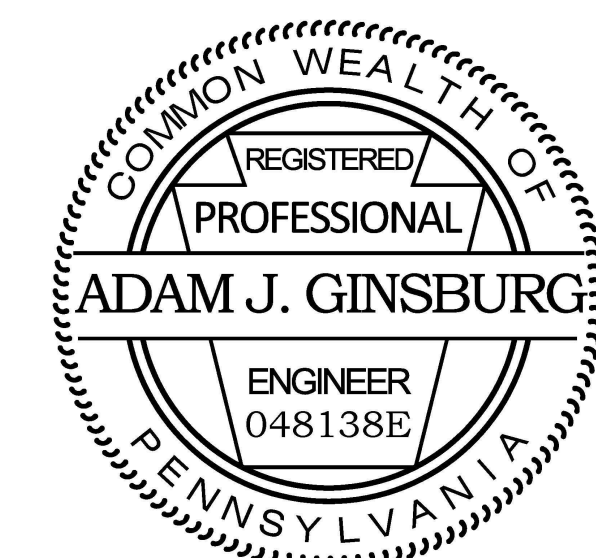
Issued for Permit  
08.05.2016



BASE<sup>4</sup>

BASE4  
9858 GLADES ROAD, #237  
BOCA RATON, FLORIDA 33434  
1.720.72BASE4 [www.base-4.com](http://www.base-4.com)

JEFF GAITHER, AIA  
4101 Woodlynn Ln  
Orlando, FL 32812



**ADAM GINSBURG**  
12641 YARDLEY DRIVE  
BOCA RATON, FL 33428

PROJECT: B4-067-1603

Hampton Inn & Suites

New Stanton, PA 15672

OWNER:

Stanton Hospitality LLC

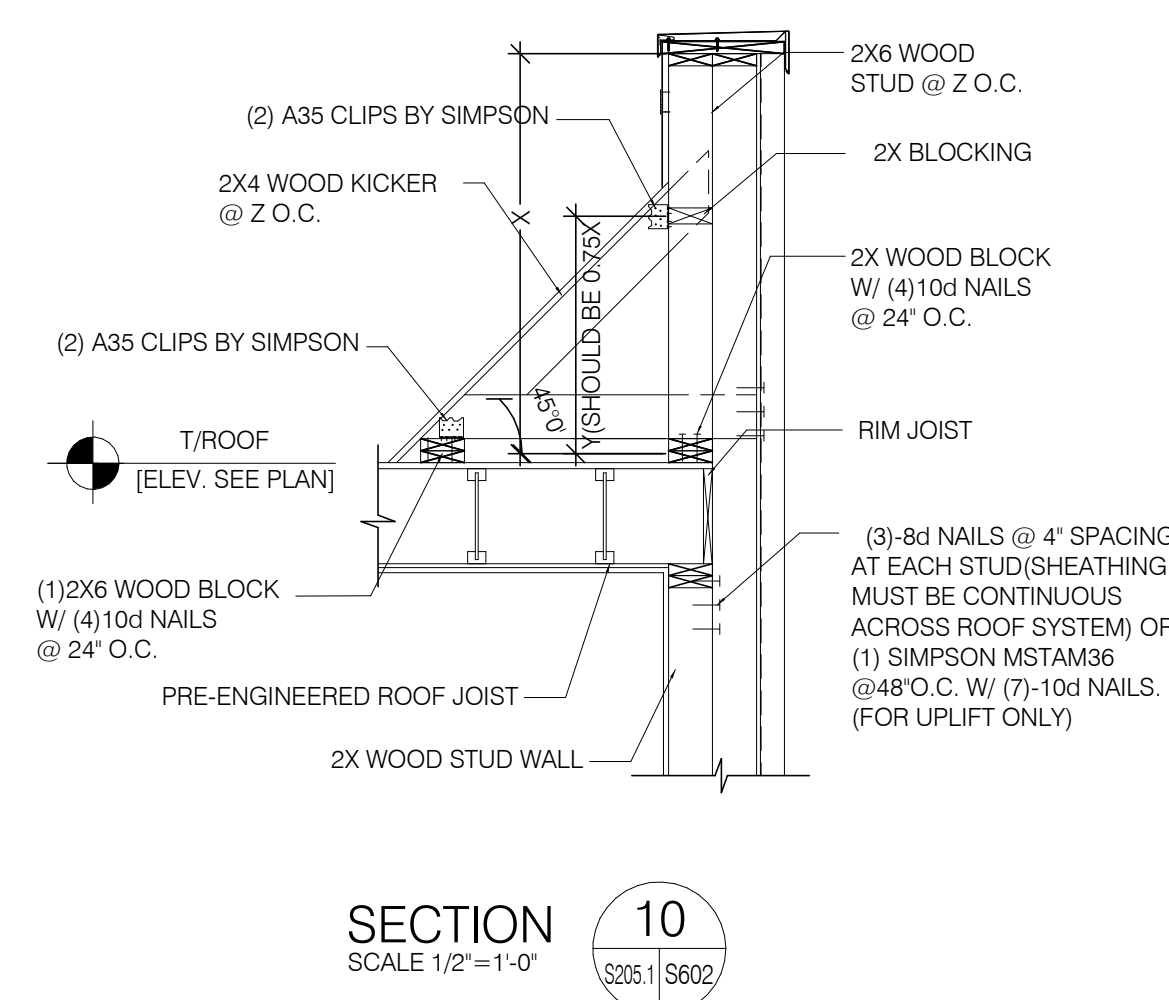
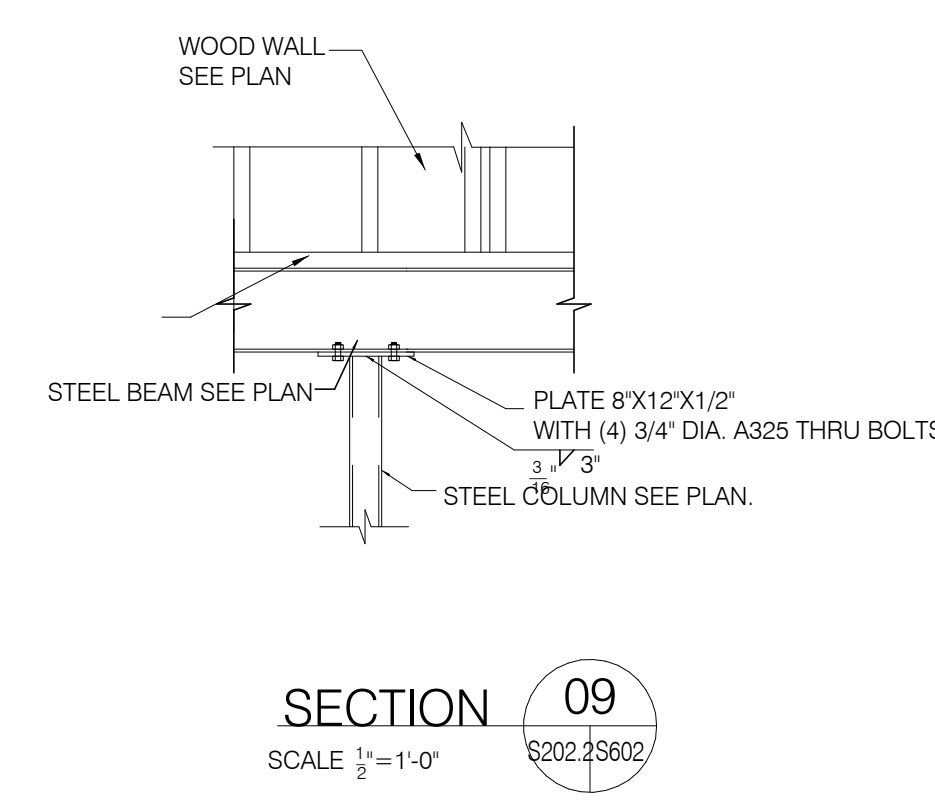
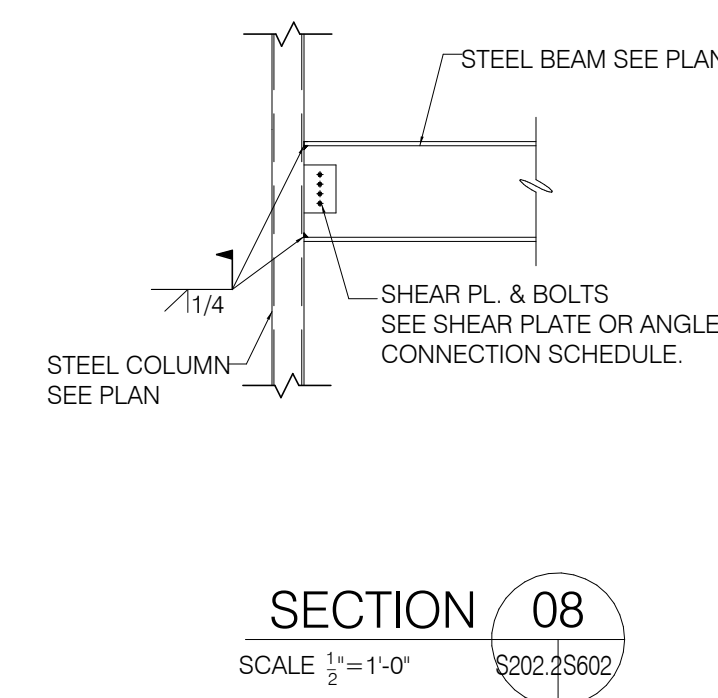
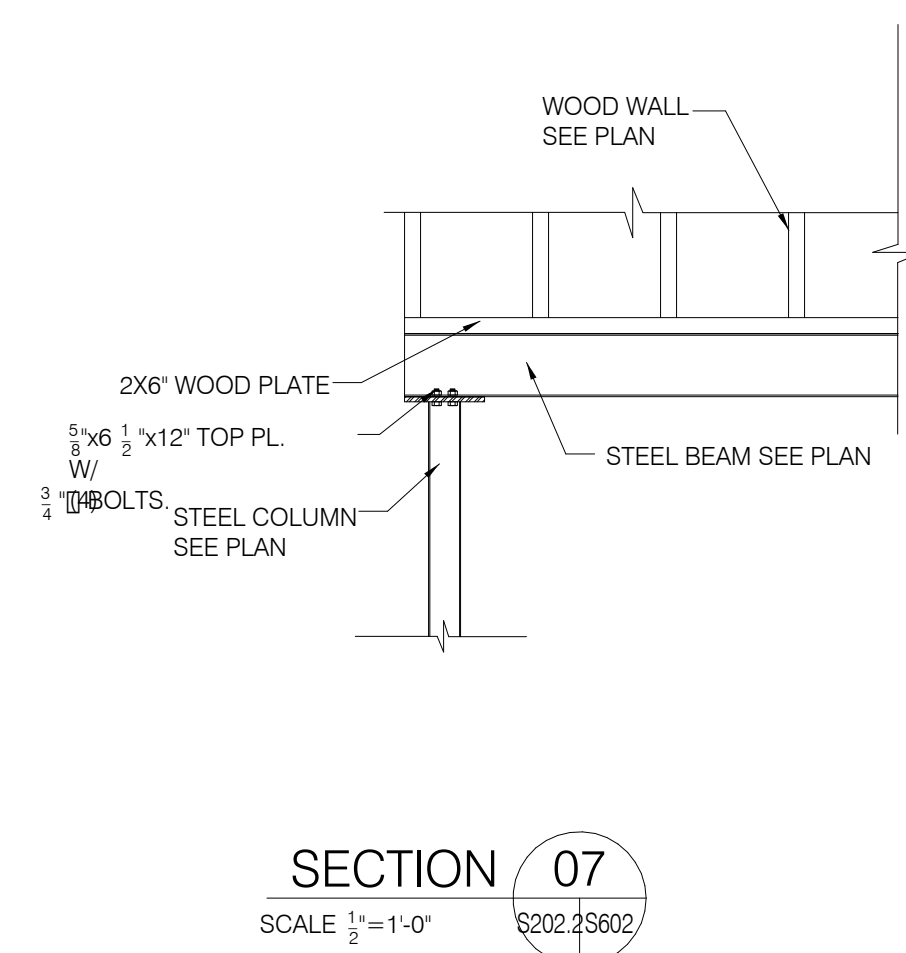
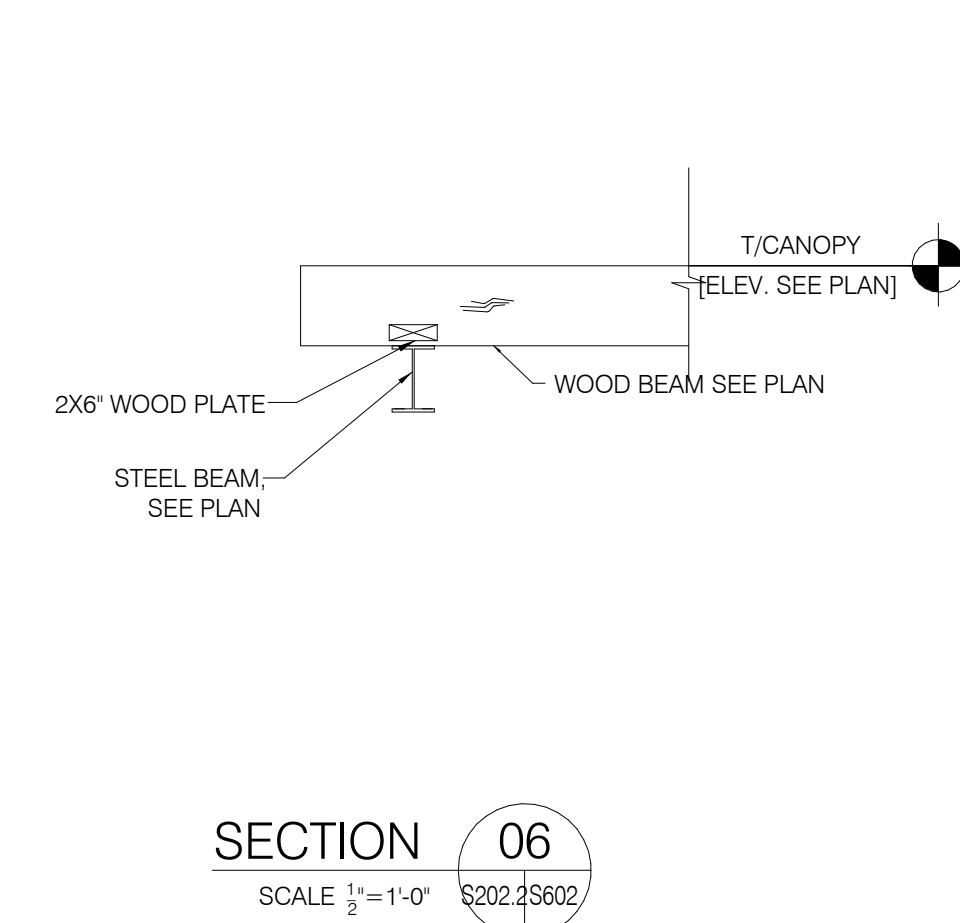
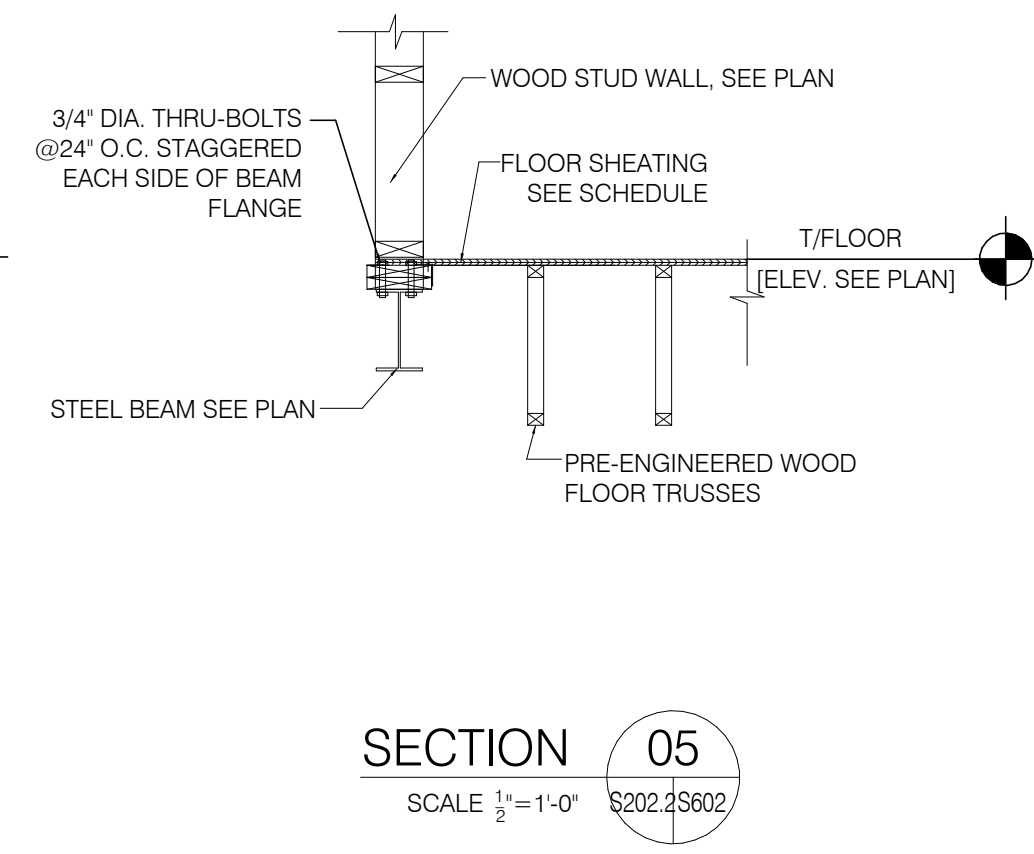
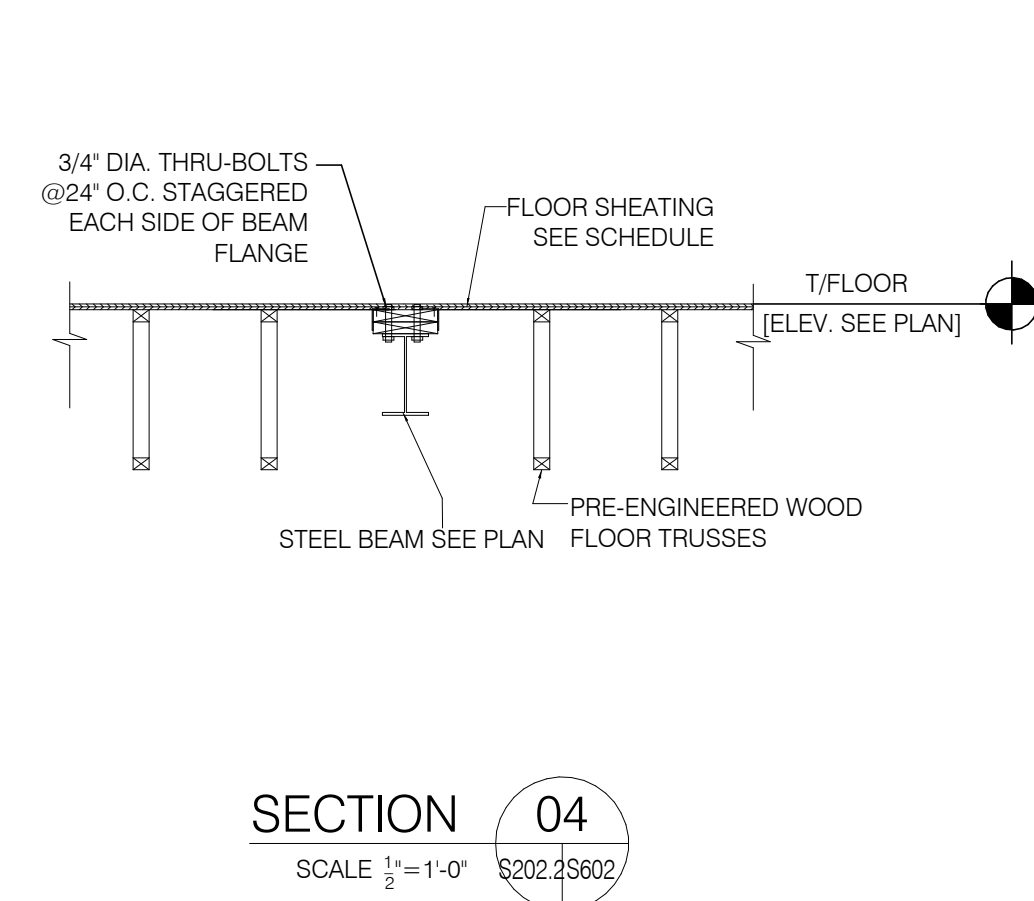
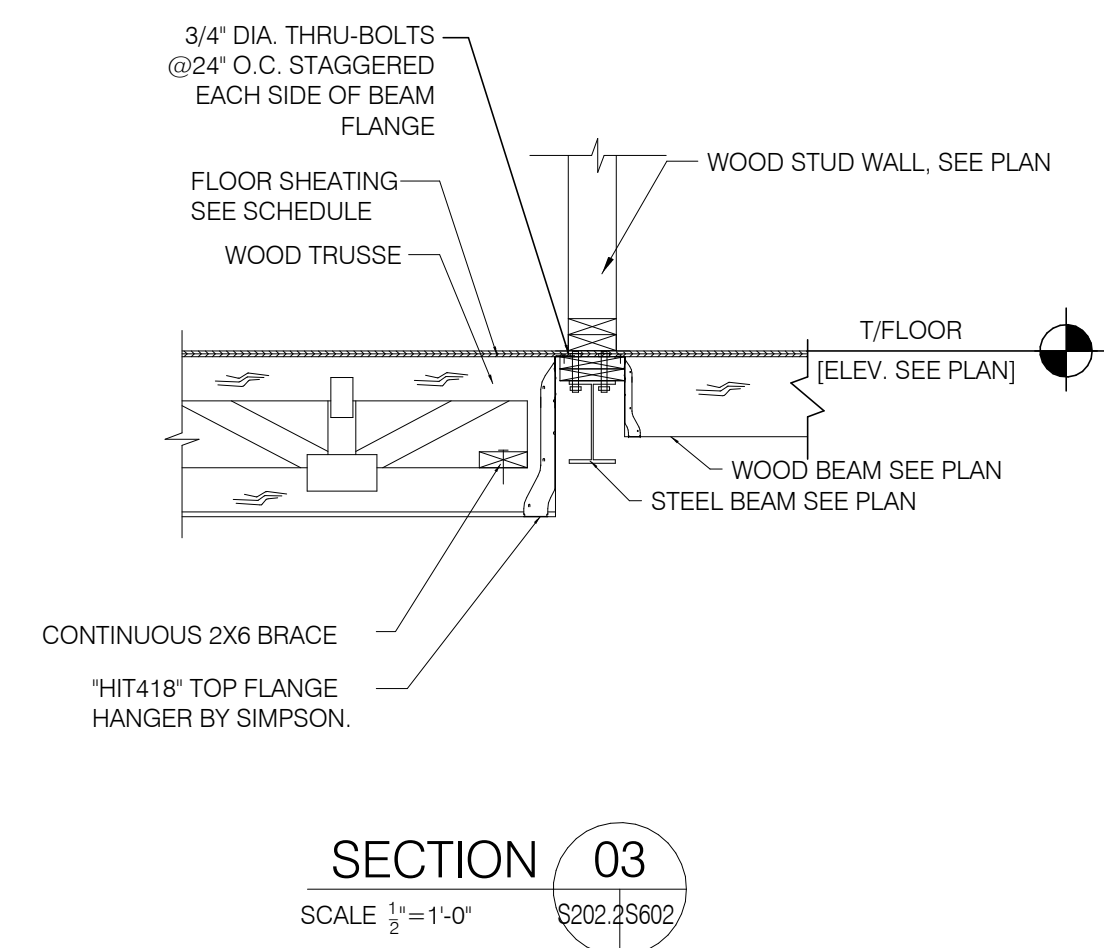
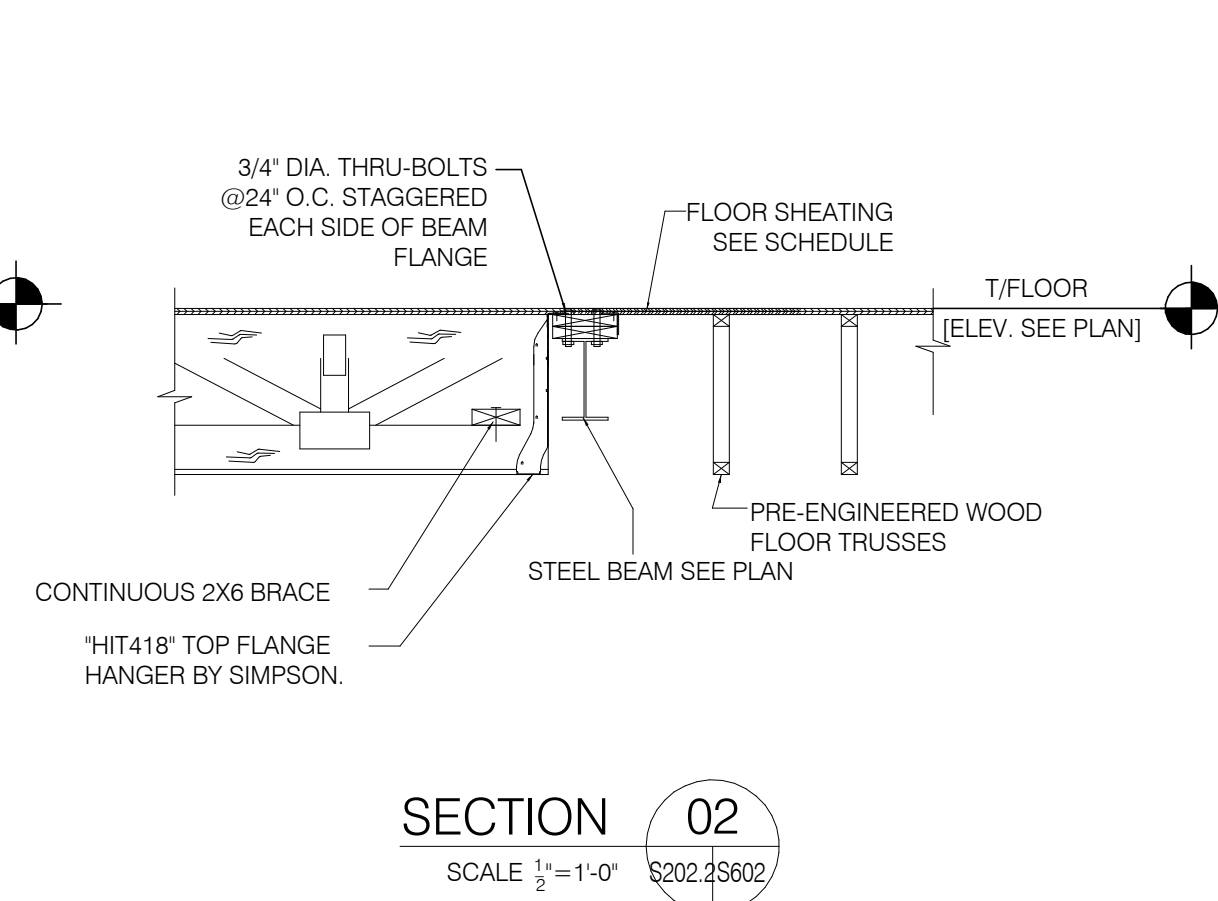
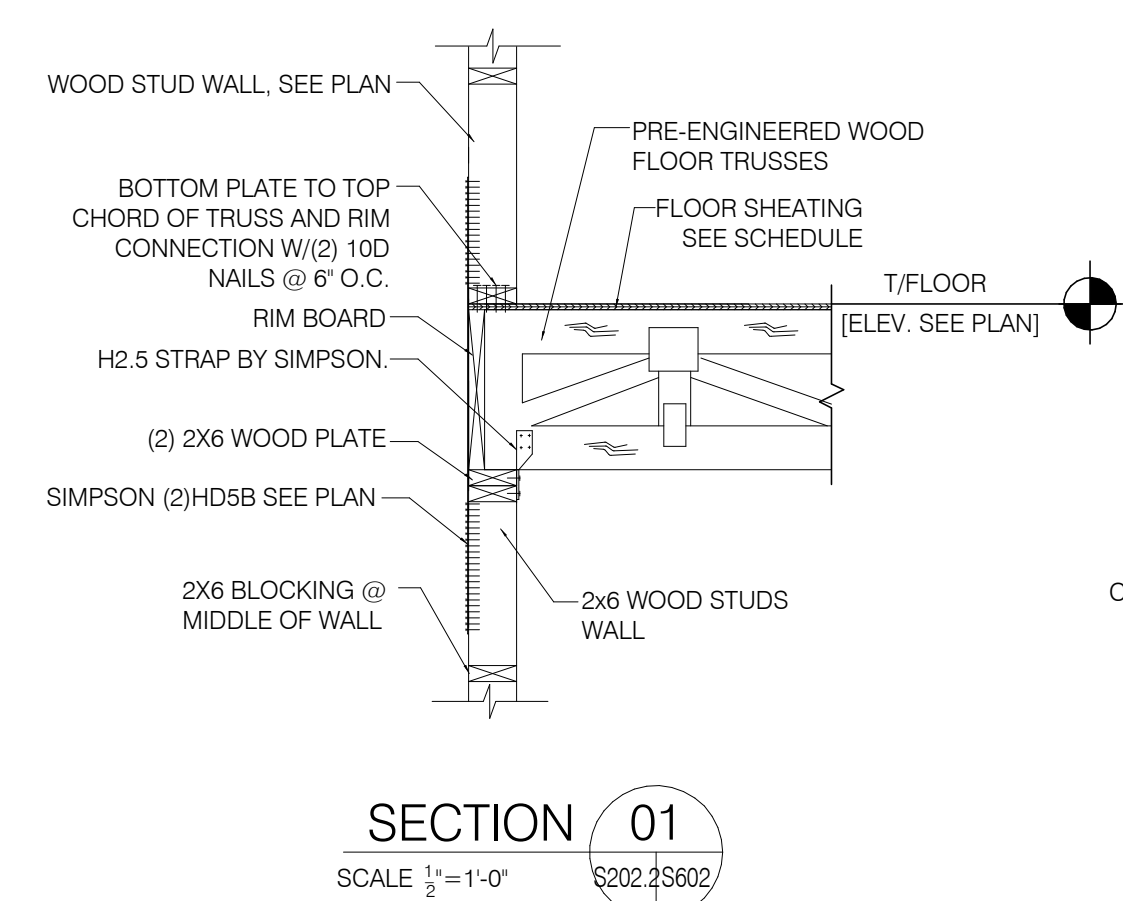
THESE DRAWINGS ARE FOR REVIEW OF DESIGN AND SCOPE DESCRIPTION ONLY. NO REPRESENTATION IS MADE TO THE ACCURACY OF THE DRAWINGS WITH REGARD TO EITHER THE DIMENSIONS OR CONDITIONS. ALL CONSULTANTS AND CONTRACTORS MUST VERIFY ANY AND ALL DIMENSIONS AND CONDITIONS WHICH ARE CRITICAL TO THEIR WORK. THESE DRAWINGS ARE INSTRUMENTS OF SERVICE AND ARE THE INTELLECTUAL PROPERTY OF JMAC ARCHITECTS. ANY UNAUTHORIZED USE OR REPRODUCTION IS PROHIBITED.

[illegible]

## DETAILS

作为说明

S-602



| PARAPET TYPE                             | STUD SIZE | X     | Y       | Z   |
|--|-----------|-------|---------|-----|
| T <sub>1</sub> /PARAPET<br>EL = +47'-4"  | 2 X 6     | 4'-0" | 3'-0"   | 24" |
| T <sub>1</sub> /PARAPET<br>EL = +51'-10" | 2 X 6     | 8'-6" | 6'-3/8" | 16" |